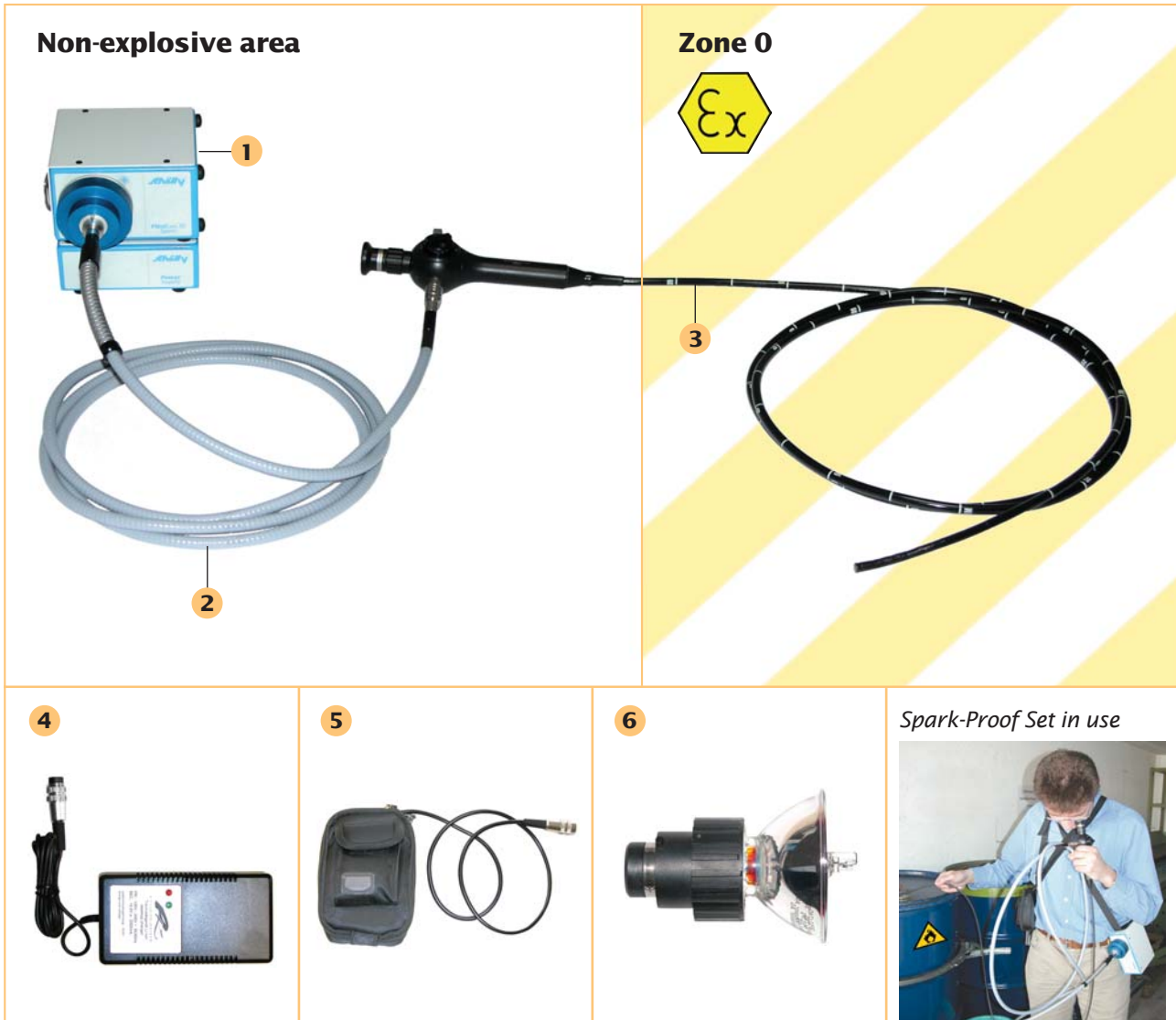




ATEX Spark-Proof Set



MPA076-000-0606-01

E

Applications in the explosion proofed area require special inspection equipment. Our Spark-Proof Set, consisting of a **flexible fiberscope with isolation cover**, a **liquid light guide** as well as a powerful **30 watt metal halide light source (acc. ATEX regulation)**, fulfill all security relevant requirements for explosion proofed area. You benefit of this security if oil- or gas tanks or other tanks with hazardous material have to be checked. This system is constructed according to best available technology and approved for explosive areas in zone 0, according the **ATEX directive** (ATEX approval only valid for complete set).

ATEX Spark-Proof Set - Item no.: FC.Atex.08190.set - consisting of:
1 Metal halide light source + power supply

Certificate	KEMA 05ATEX4166
Marking	Ex II (1) G [Ex op is] IIC excl. CS2
Light source	
▪ Power	30 Watt metal halide, 9 - 16 V
▪ Dimension/Weight	approx. 130 x 80 x 130 mm (W x H x D), approx. 1 kg, incl. carrying belt
Power supply	
▪ Input	100 - 240 V, 50/60 Hz
▪ Output	12 V
▪ Fuse	Glass fuse 5 x 20 mm, 5 A, type F Only this fuse type can be used!
▪ Dimension/Weight	approx. 130 x 55 x 175 mm (W x H x D), approx. 0.8 kg

2 Liquid light guide

▪ Length	3,000 mm, detachable
▪ Activ-ø	5 mm

3 Fiberscope Ø 8 mm

▪ Working-ø	8 mm
▪ Working length	2,000 mm
▪ Deflection	4 x 90°
▪ Objective	0°/100° (viewing direction/field of view)
▪ Work element	Completely water- and pressure-tight up to 1 bar overpressure. Tube and objective area out of gas and diesel resistant synthetics.

4 Battery charger Li Ion

▪ Input	100 - 240 V, 50/60 Hz
▪ Output	14.8 V ... 2,000 mA
▪ Status	LED indicator

5 Battery pack

▪ Type	Lithium-Ion Accu
▪ Nominal voltage	14.4 V
▪ Capacity	4.3 Ah
▪ Charge time	2 h
▪ Operation time	1.5 - 2 h

6 Spare lamp

	Item no. Lamp.50MH
▪ Lamp type	Phillips metal halide lamp, 35 W, type no.: RP50/740 Only this lamp type can be used!
▪ Average lamp life	> 5.000 h

Delivery inclusive transport case.